



# Quick and Easy Business Apps with Power Platform

Jared Shockley, Sr. Site Reliability Engineer

*Get ready to be what's next.*



No need to take pictures!  
This deck will be available online at:  
<http://jshoq.me/spsens2019thanks>



Jared Shockley – <http://jaredontech.com>

## Senior Site Reliability Engineer

Run and improve internal/external services used by developers world-wide (Azure DevOps, 1ES)

## Prior Experience

Service Owner/Sr. Svc. Eng. SharePoint - MSIT  
Director of IT Services, Medical Practice  
Service Owner, Microsoft IT – Finance IT

## Primary Experience Areas

SharePoint and Office 365  
Azure Cloud Services  
IT Service Management, Governance,  
Compliance



 @jshoq

 /in/jaredshockley

 /JaredOnTech



# Agenda



How to Leverage Cloud Services

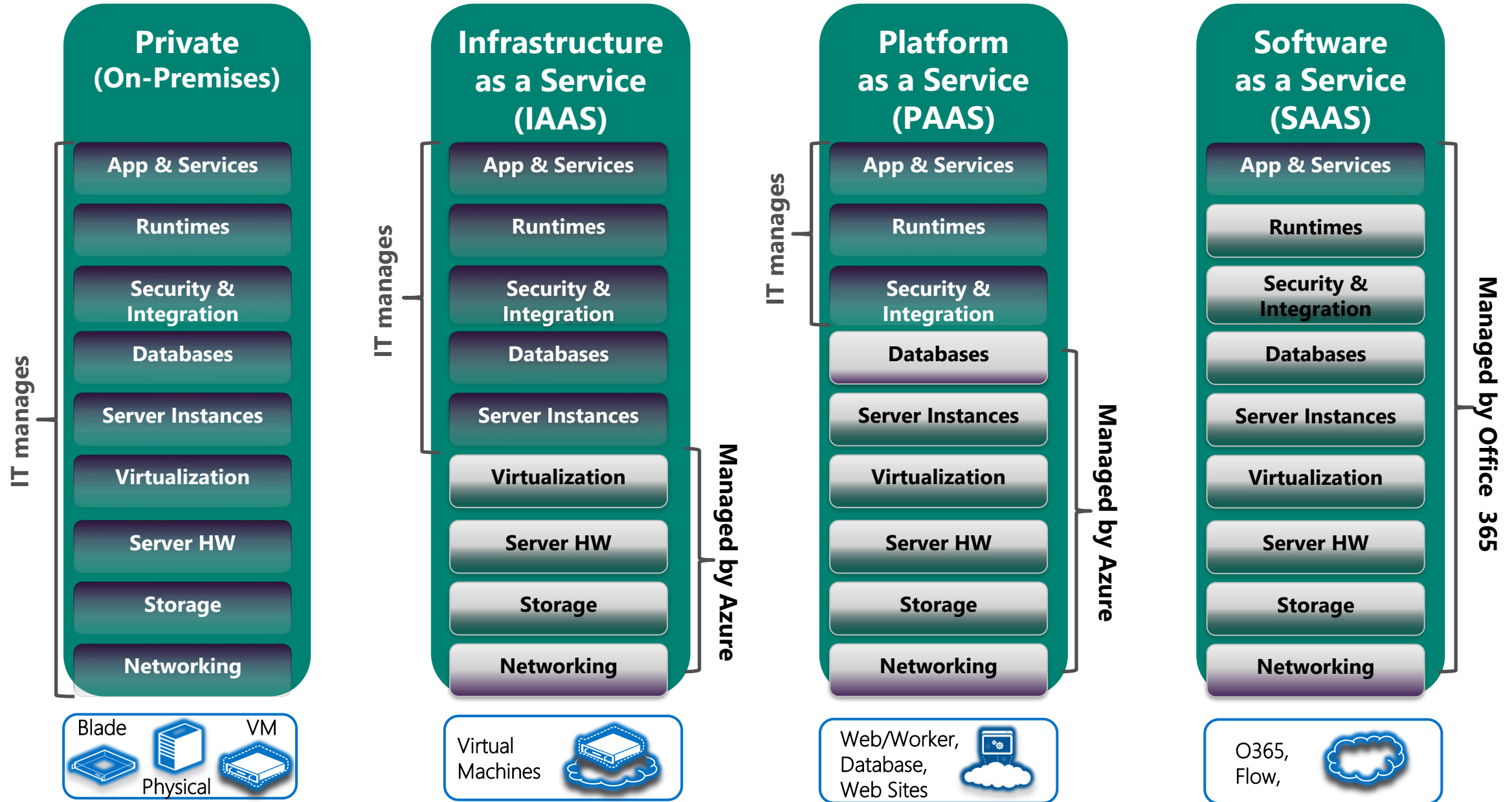
What are no-code apps?

Microsoft Flow

PowerApps

Azure Logic Apps

# How to Leverage Cloud Services



# What are “No-code Apps”?



Create process integration without need for “Dev”

Extends the usability of SharePoint to meet processes

Created and Managed by business users

Built through SharePoint Designer or InfoPath



# Why do we need “No-code Apps”?



SharePoint Designer and InfoPath are not being improved

Still a need for business/power users to make SharePoint custom for their workflow

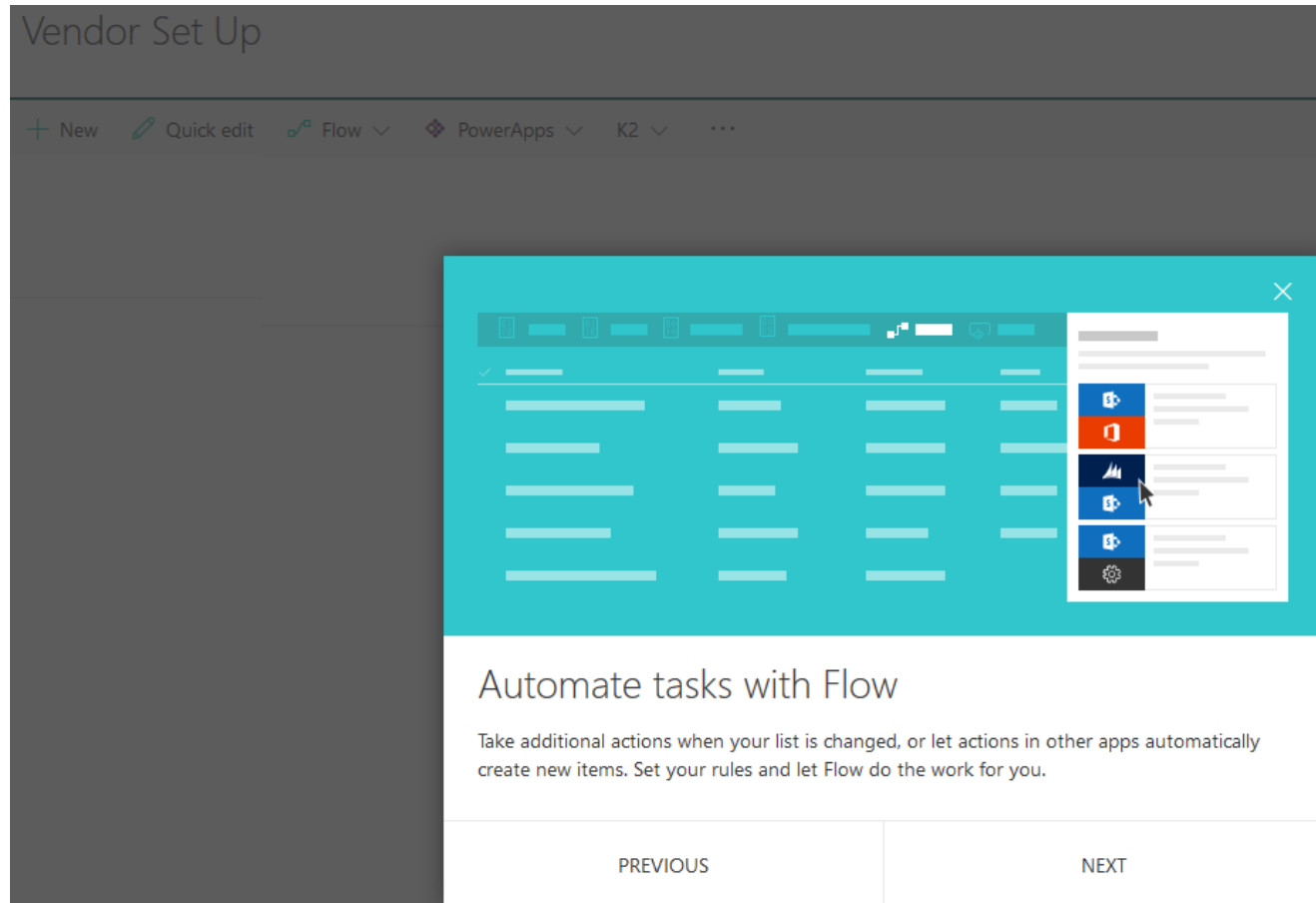
Business/power users do not want to rely on IT for solutions

**What is the  
future of  
No-code  
Apps?**





# Microsoft Flow



Flow can replace SPD Workflows for "basic" automation

No Code, visual UI

Easy for biz teams to build/manage

No need for Correlation ID

Very Powerful; Flow will have further governance by release

# Microsoft Flow

The screenshot shows the Microsoft Flow interface. At the top, there is a navigation bar with "Flow Preview", "My flows", "Browse", and "Learn". A search bar contains "Search templates...". Below the navigation bar, there are filters for "Showing All flows" and "sorted by Popularity". The main area displays a grid of 12 templates, each with a title, a description, and usage statistics.

Template Title	Usage
Create a to-do item in Wunderlist for important emails	Used 254 times
Save my email attachments to a SharePoint document library	Used 195 times
Get daily reminders in Email	Used 103 times
Save tweets to a CSV file in OneDrive	Used 99 times
Translate non-English emails	Used 56 times
Save email attachments to Dropbox	Used 55 times
Send me an email when a new file is added in SharePoint Online	Used 54 times
Get a text notification when you receive an email from your manager	Used 53 times
Copy new files in Dropbox to a specific folder on OneDrive	Used 51 times
Email yourself new Tweets about a certain keyword	Used 40 times
Save tweets to a CSV file in Dropbox	Used 33 times
Copy files between OneDrive and Dropbox	Used 32 times

Over 1000 templates already:

- Save email attachments to DropBox
- Copy files between systems
- Post to Yammer if hashtag
- Share tweets on Facebook
- Translate mail to language



# Build your own flows in an easy to use visual designer

Sending an Exchange email when a new file is added in Dropbox

Authenticate to your Dropbox account.

Select folder to monitor

Authenticate to your O365 account.

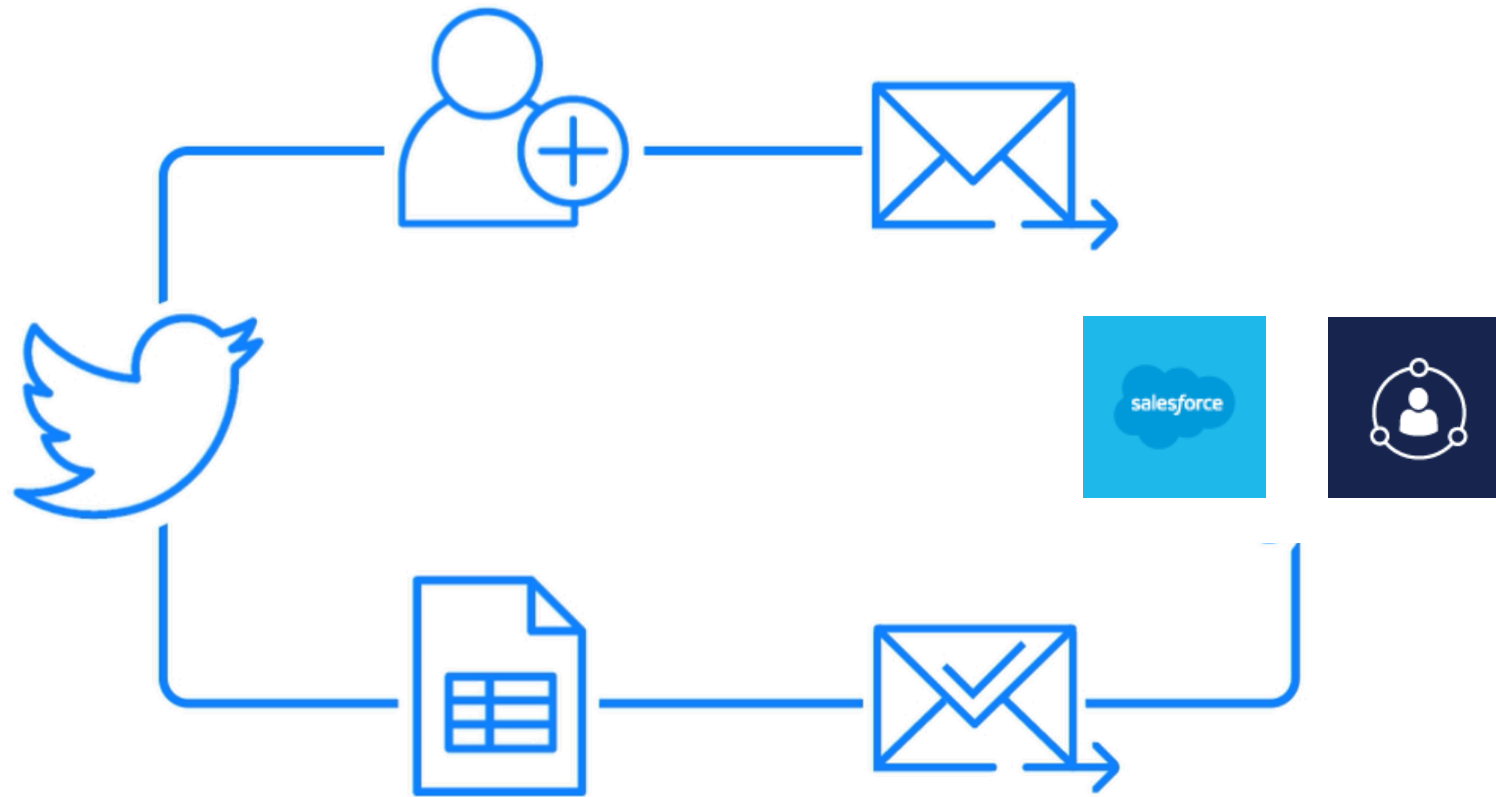
Build email *Subject* and *Body*

The image shows a flow designer interface with two main steps:

- When a file is created:** This step includes a folder selection dropdown set to 'PowerApps'. A 'Dropbox / Dropbox' dialog box is open, showing the 'PowerApps' folder selected. The step is connected to the email account 'johnsharp@hotmail.com'.
- Send Email:** This step is configured to send an email. The subject line is 'New file: [File name] has been added to your Dropbox'. The body is 'New information available'. Below the body, there are options to insert data from previous steps, including 'File content', 'File identifier', 'File name', 'File path', 'File entity tag', and 'File content type'. The 'To' field is currently empty. The step is connected to the email account 'johnsharp@contoso.com'.

Choose to include properties from previous step (Dropbox file) to improve relevance

Specify *Send To* email address and additional properties (optional): *From*, *CC*, *BCC* and *Importance*



Automate advanced scenarios with multiple steps, branching conditions, and more





Integrate the systems  
you're already using...  
even custom APIs.

# Microsoft Flow

#SPSENS Twitter Feed  
Schedule Social Media



# PowerBI

Download for free at [PowerBI.com](https://powerbi.com) or the Windows Store

Benefit from continuous updates and community-driven innovation

Streamlined for no-code advanced analytics

Built-in intelligence to speed up your analysis

Automatic updates from the Windows Store



# Get data

Easily connect, clean, and mashup data



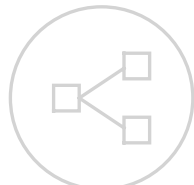
Connect to 80+ data sources, both on-premises and cloud



Shape, transform, and clean data for analysis



Live connectivity to on-premises and cloud data sources



Extend with custom data connectors for any data source



Prep your data using the familiar Power Query experience on the web





# Self-service prep for big data

Ingest, transform & integrate big data with Power BI



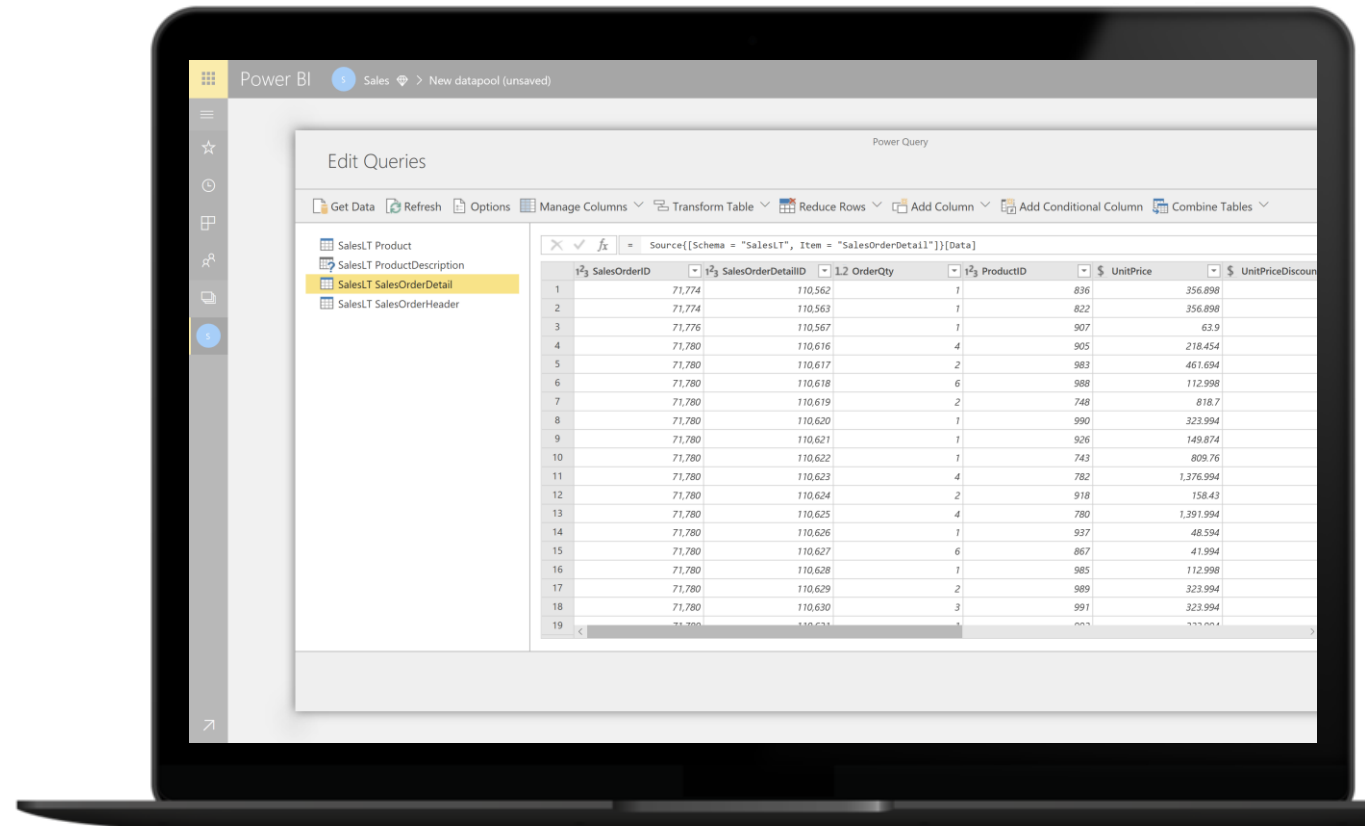
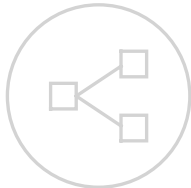
Prep your data using the familiar Power Query experience



Get started quickly with a common data model



Extend self-service prep to Azure Data Lake Storage



# Analyze

Build powerful models and flexible measures



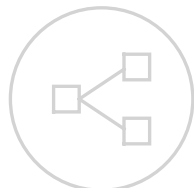
Automatically created model when connecting to data



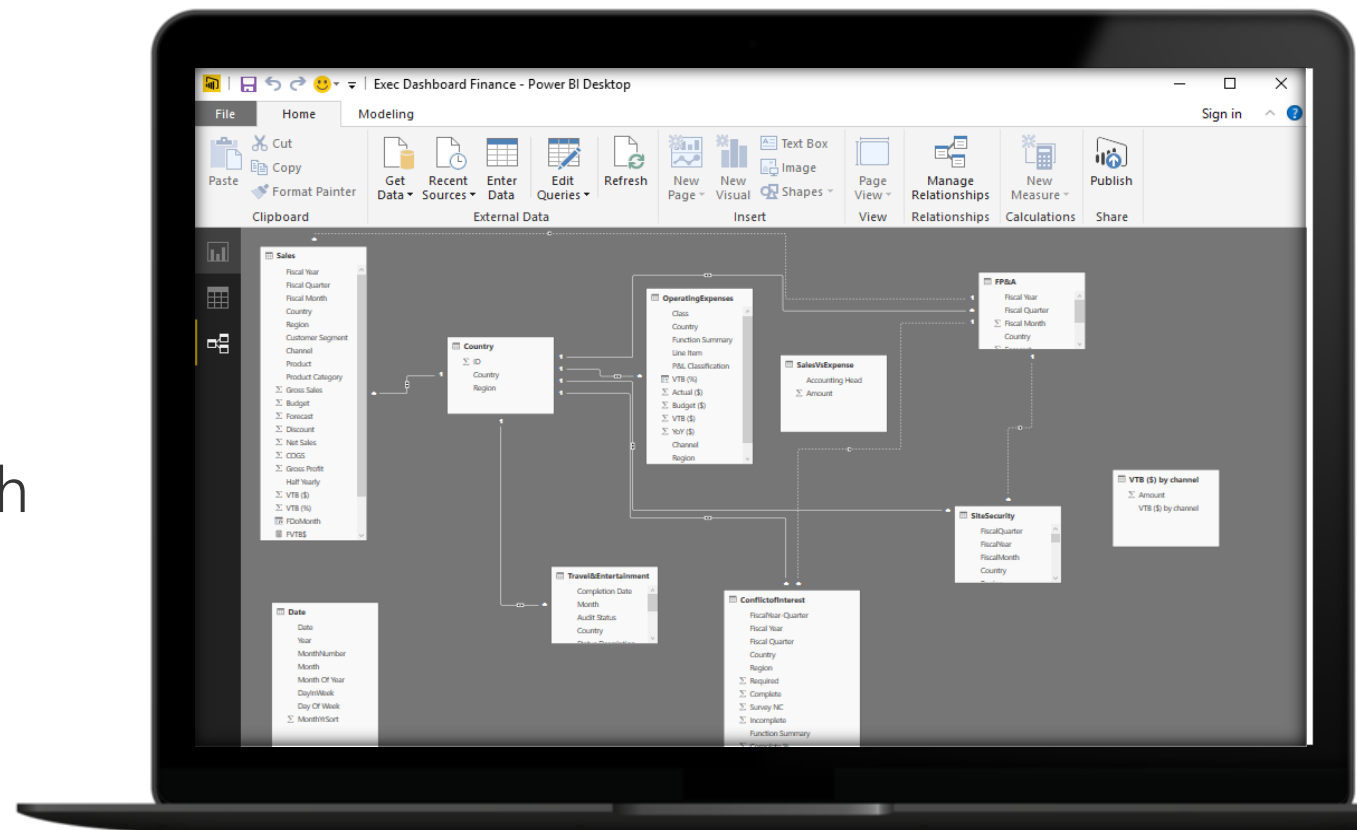
High-performance, in-memory engine



Point and click analysis with Quick Measures, Clustering, and Binning



Create powerful measures with familiar DAX formulas



# Visualize

## Create stunning interactive reports



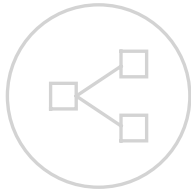
Author reports using 150+ visuals via a drag-and-drop canvas



Explore data across multiple interactive visualizations



Provide insights in the context of your business with Custom Visuals



Visualize your data story with bookmarks and custom navigation





# Publish

## Share insights with others



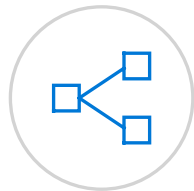
Publish directly to the cloud or on-premises



Automatic data refresh, so your reports are always up to date



Package your reports in apps for easy consumption and control



Manage your analytics content with admin and governance tools



# Collaborate

## Empower your organization



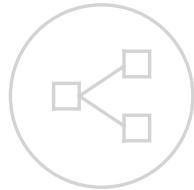
Provide access to reports and dashboards anywhere on any device



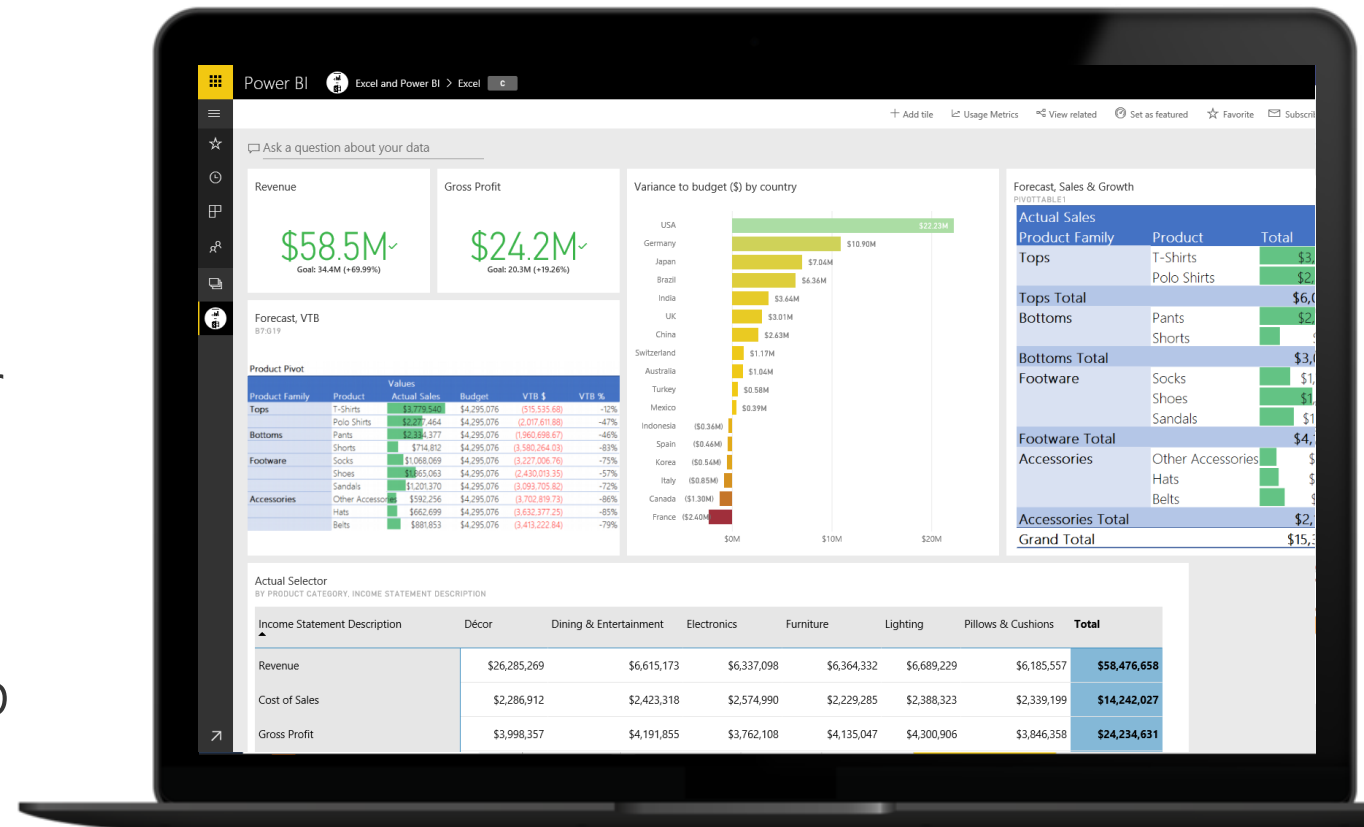
Enable users to ask questions and automatically discover insights from the data



Deliver insights through other services such as SharePoint and Teams



Connect live to your models in Excel and Power BI Desktop



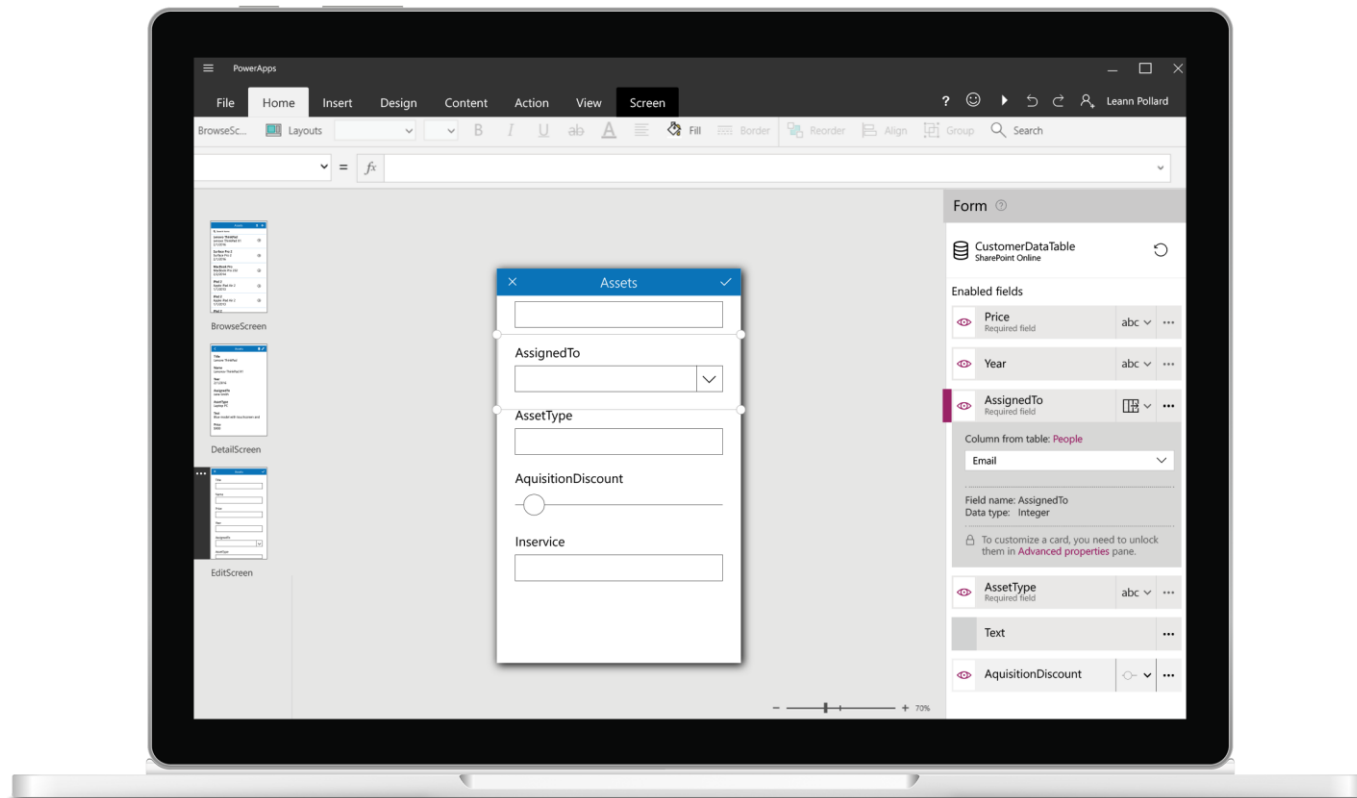


PowerBI

#SPSENS Twitter Feed



# PowerApps



No Code Visual Designer Online

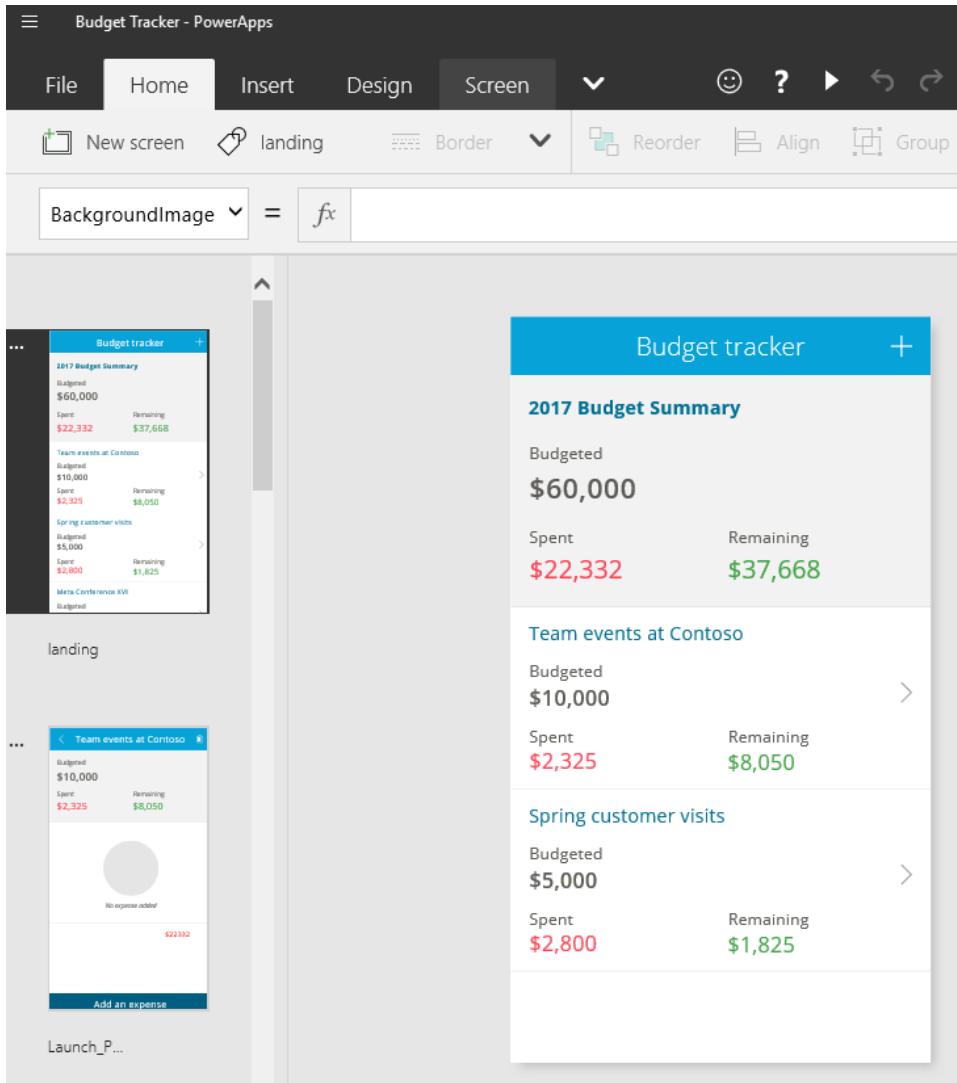
Device capabilities – GPS, Camera, Pen

Quickly generate and customize apps based on Excel files, SharePoint Online lists, Salesforce records and more.

Connect to data in on premise systems through a common Data Gateway.

Your apps will be able to fully interact with underlying sources and will respect the permissions you've already established in them

# PowerApps as an IT Tool



## Encourage Business Teams to use PowerApps

- Smaller point design apps no longer take up IT time
- Business teams can make the app work for them both business flow and UI
- Allow Business teams to iterate quickly
- When they hit their capacity or PowerApps cannot do what they want, onboard to IT tooling and support



# PowerApps

#SPSENS Twitter Feed  
Schedule Social Media



**The  
Future of  
No-code  
Apps is  
Now!**



# Future is the "Business Application Platform"

## Build modern business apps fast

Compose analytics, user experiences, and automation using an integrated set of services from Microsoft



## Empowered power users

People who understand their business needs best can now build apps quickly without writing code



Power BI



PowerApps



Microsoft Flow

## More efficient developers(\*)

Seamlessly extend capabilities for power users and leverage powerful Azure platform services

Azure Data analytics  
Azure Internet of Things  
SQL Server BI  
...

Azure AppServices  
Azure Service Fabric  
Azure Functions  
...

Azure Logic Apps  
Azure API Management  
BizTalk  
...

## Connected data across apps

Whether built on the Common Data Model or integrated with existing systems, get more value from your data



Common Data Model

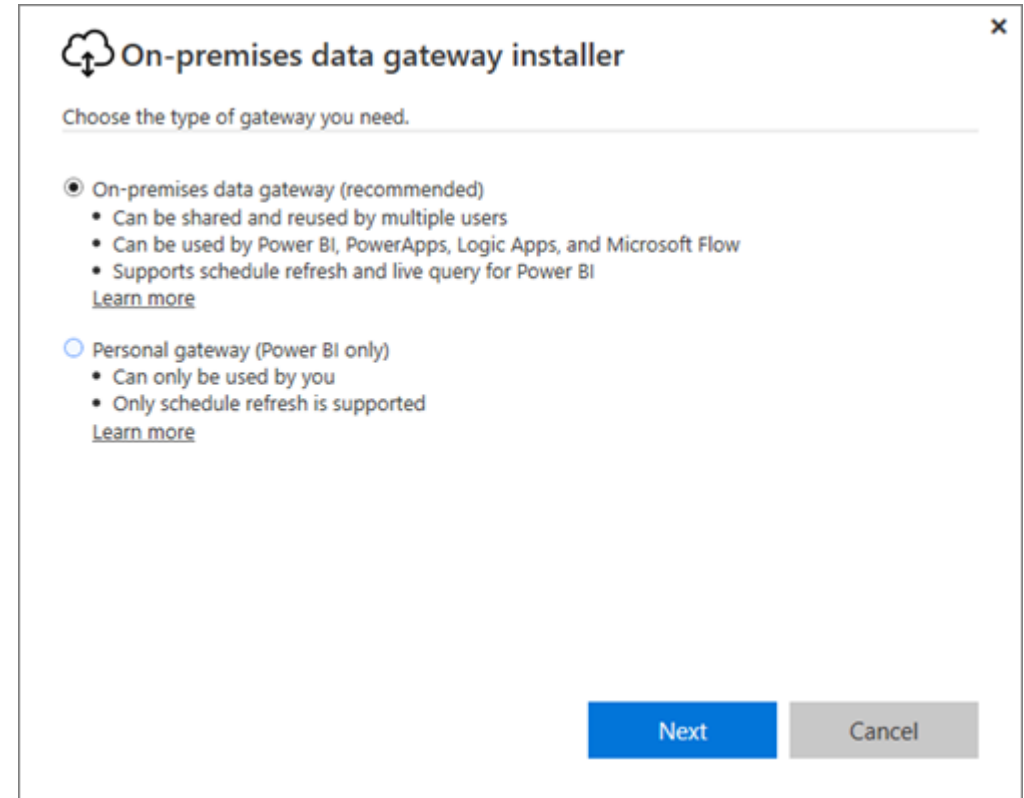


Connectors & Gateways

# Hybrid Connectivity for Power Platform

## On-premises data gateway

- Allows PowerBI, PowerApps and Flow to access on-premises data sources and systems
- Easy to Manage
  - Centrally by IT
  - Individually by team
- Extends capabilities to on-premises world





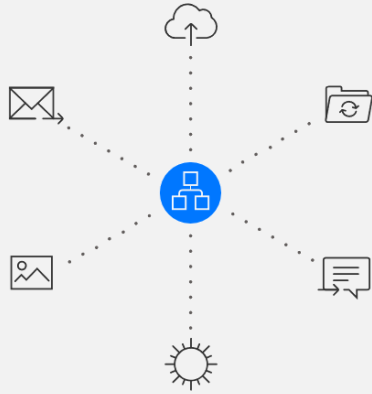
# Azure Logic Apps

- Easy to use design tools
  - End-to-end in the browser
  - Advanced with Visual Studio tools
- Connect APIs easily
  - Connect disparate systems
  - Connect fast with built-in connectors
  - Develop your own APIs to make custom connections
- Get started quickly from templates
  - Advanced B2B connections
  - Integrate with other SaaS solutions
- Extensibility baked-in
  - Designed to work with your own APIs and code
  - Tie Logic Apps to Functions to keep the
- Real integration horsepower
  - Leverage the power of BizTalk
  - Grows with your needs
  - Pay by the transaction





# Logic Apps vs. Flow



## MICROSOFT FLOW

- Modern equivalent to SharePoint Designer Workflows
  - Tied to PowerApps
- Graphical interface for editing
- Connectivity to select APIs
  - SharePoint
  - SQL DB
  - Third Parties



## LOGIC APPS

- Scalable app service
  - Can scale with usage
- Starts from Graphical User Interface
  - Can be tuned via JSON and other code
- Can connect to any services available publicly



[www.microsoft.com/ITshowcase](http://www.microsoft.com/ITshowcase)

## Focus



## Facts

180K

Managed Windows 10  
Systems

1.2M

Devices hit the  
Microsoft network

880+

Site locations

Engage with me!



Jared Shockley



@jshoq



/in/jaredshockley



/JaredOnTech



**This deck will be available online at:  
<http://jshoq.me/spsens2019thanks>**





# Appendix

## Azure Logic Apps

- <https://azure.microsoft.com/en-us/services/app-service/logic/>
- <https://azure.microsoft.com/en-us/documentation/articles/app-service-logic-what-are-logic-apps/>

## Microsoft Flow

- <http://flow.microsoft.com>
- <https://flow.microsoft.com/en-us/documentation/getting-started/>
- <https://powerusers.microsoft.com/t5/Microsoft-Flow-Community/ct-p/FlowCommunity>